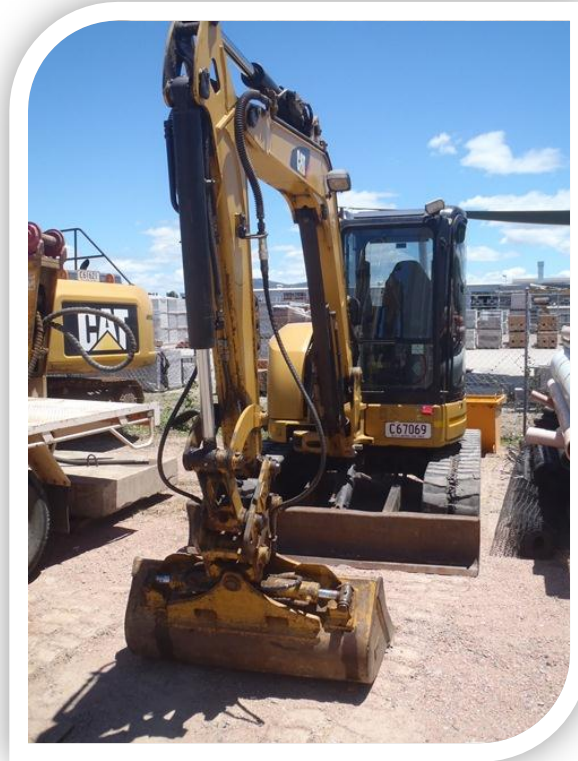




CATERPILLAR HYDRAULIC EXCAVATOR 305c



SPECIFICATIONS

Shipping Length of Unit	17.5ft in	5330mm	Net Power	47hp	35kw
Shipping Height of Unit	8.3ft in	2550mm	Power Measured @	2400rpm	
Max Cutting Height	17.6ft in	5370mm	Displacement	153cu in	2.5L
Max Loading Height	12.5ft in	3800mm	Number of Cylinders	4	
Max Reach Along Ground	18.6ft in	5650mm	Operational		
Max Vertical Wall Digging Depth	8.3ft in	2530mm	Operating Weight	11725lb	5230kg
Max Digging Depth	11.4ft in	3490mm	Fuel Capacity	19gal	72L
Dimensions			Cooling System	2.9gal	11L
Width to Outside of Tracks	6.5ft in	1980mm	Hydraulic System Fluid Capacity	0.6gal	78L
Length of Track on Ground	8.5ft in	2580mm	Engine Oil Capacity	1.9gal	7L
Ground Clearance	1.1ft in	340mm	Operating Voltage	12V	
Height to Top of Cab	8.3ft in	2550mm	Alternative Supplied Amperage	50amps	
Tail Swing Radius	3.2ft in	990mm	Hydraulic System Relief Valve Pressure	3553psi	24500kPa
Counterweight Clearance	2ft in	615mm	Hydraulic Pump Flow Capacity	34.3gal/min	130L/min
Undercarriage			Swing Mechanism		
Track Gauge	5.2ft in	1580mm	Swing Speed	9rpm	
Shoe Size	16in	400mm	Undercarriage		
Engine			Shoe Size	16in	400mm
Make	Mitsubishi		Max Travel Speed	2.8mph	4.6km/h
Model	S4Q2-T		Track Gauge	5.2ft in	1580mm
Gross Power	49.2hp	36.7kw			

CIVIL & MARINE INFRASTRUCTURE SPECIALISTS