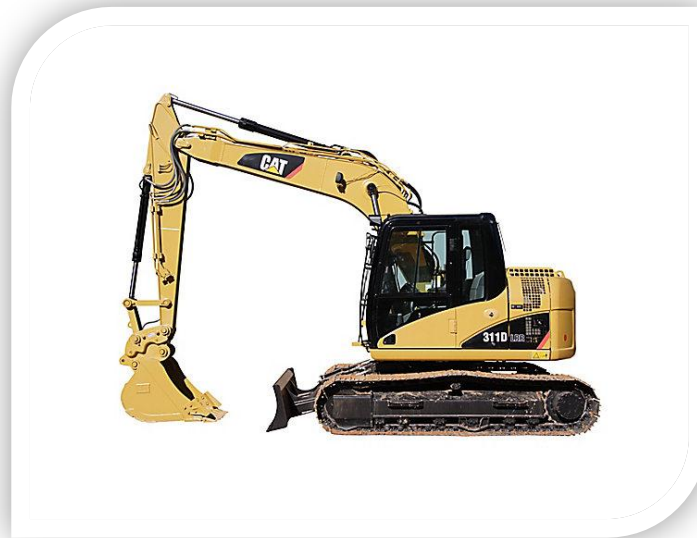




**CATERPILLAR HYDRAULIC EXCAVATOR 311D**



**SPECIFICATIONS**

SHIPPING LENGTH OF UNIT	22.7ft in	6915mm
SHIPPING HEIGHT OF UNIT	9.4ft in	2860mm
MAX CUTTING HEIGHT	25.6ft in	7800mm
MAX LOADING HEIGHT	17.9ft in	5450mm
MAX REACH ALONG GROUND	25.3ft in	7700mm
MAX VERTICAL WALL DIGGING DEPTH	14.6ft in	4460mm
MAX DIGGING DEPTH	16.5ft in	5040mm

**DIMENSIONS**

WIDTH TO OUTSIDE OF TRACKS	8.5ft in	2590mm
LENGTH OF TRACK ON GROUND	9.1ft in	2780mm
GROUND CLEARANCE	1.5ft in	455mm
HEIGHT TO TOP OF CAB	9ft in	2755mm
TAIL SWING RADIUS	5.7ft in	1750mm
COUNTERWEIGHT CLEARANCE	3ft in	910mm

**UNDERCARRIAGE**

TRACK GAUGE	6.5ft in	1990mm
SHOE SIZE	23.6in	600mm

**SPECIFICATION**

**ENGINE**

MAKE	CAT	
MODEL	C4.2 ACERT	
GROSS POWER	86hp	64.1kw

NET POWER	80hp	59.7kw
DISPLACEMENT	259.4cu in	4.3l
<b>OPERATIONAL</b>		
OPERATING WEIGHT	27513.7lb	12480kg
FUEL CAPACITY	55.5gal	210l
COOLING SYSTEM FLUID CAPACITY	4.8gal	18l
HYDRAULIC SYSTEM FLUID CAPACITY	38.3gal	145l
ENGINE OIL CAPACITY	5gal	19l
SWING DRIVE FLUID CAPACITY	0.79gal	3l
HYDRAULIC SYSTEM RELIEF VALVE PRESSURE	5076.3psi	35000kPa
HYDRAULIC PUMP FLOW CAPACITY	30.9gal/min	117l/m
<b>SWING MECHANISM</b>		
SWING SPEED	11.4RPM	30900Nm
SWING TORQUE	22790.7lb ft	
<b>UNDERCARRIAGE</b>		
SHOE SIZE	23.6in	600mm
GROUND PRESSURE	5psi	34.2kPa
MAX TRAVEL SPEED	3.2mph	5.1km/h
DRAWBAR PULL	25628.2lb	114kN
TRACK GAUGE	6.5ft in	1990mm
<b>BUCKETS</b>		
REFERENCE BUCKET CAPACITY	0.52yd 3	0.4m3
MINIMUM BUCKET CAPACITY	0.33yd 3	0.25m3
MAXIMUM BUCKET CAPACITY	0.97yd 3	0.74m3

**CIVIL & MARINE INFRASTRUCTURE SPECIALISTS**